


Group Policies

(November 28, 2016)


© Abdou Illia, Fall 2016 1



Learning Objective

- Discuss Group Policies and their use
- Create/Modify Group Policy Objects

2



Overview of Group Policies

- Group policies are a set of configuration settings that an administrator applies to one or more objects in the Active Directory
- A group policy consists of settings that govern how an object and its child objects behave.
- Group Policies can be applied to: a site, a domain, or an OU.

3

Benefits of Group Policies

- Lowering your network's total cost of ownership (TCO)
 - If no policies are used to prevent users from taking damaging actions there may be costly consequences.
- Securing a user's environment

4

Types of Group Policies

- Software Settings
- Logon/logoff scripts
- Security Settings (password policy, etc.)
- Administrative Templates
- Remote Installation Services (RIS)
- Folder Redirection

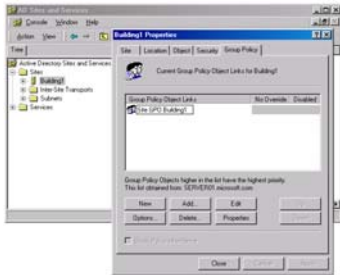
5

Group Policy Objects (GPOs)

- A GPO contains group policy settings for sites, domains, and OUs.
- One or more GPOs can be applied to a site, a domain, or an OU.
- A local GPO exists on every Windows 2003 computer, and by default, only security settings are configured.
- Need appropriate permissions to create GPO
 - Enterprise Administrator for GPO at site level
 - Domain Administrator for GPO at domain or OU level

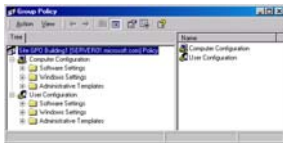
6

Creating a GPO



7

Using the Group Policy Snap-In



8

Support for Windows 95, Windows 98, and Windows NT 4.0

- The Group Policy snap-in does not provide client support for Microsoft Windows 95, Windows 98, or Windows NT computers.
- Windows NT is supported through .adm files and Poedit.exe.
- Windows 95 and Windows 98 clients are supported through the Windows 9x System Policy Editor.

9

The Group Policy snap-in

- The Group Policy snap-in is divided into:
 - a Computer Configuration node and
 - a User Configuration node
- Computer Configuration policies affect the computer environment by
 - Implementing changes in the OS settings
 - Implementing changes in the hardware settings
 - Implementing changes in applications, etc.

Note: GPO set in Computer Configuration apply when the OS initialize.

10

The Group Policy snap-in (cont.)

- User Configuration policies affect the user environment including
 - Desktop appearance
 - Applications available to the user
 - Start menu, etc.

Note: GPO set in User Configuration apply when the user logs on to the domain.

11

GPO and applications

- Applications can be assigned or published using GPO
- With User Configuration, you can assign or publish applications to users
 - If an application is assigned, it will appear in the Start menu for all site's users, domain's users, or OU users.
 - If an application is published, it will appear in the Add/Remove Programs wizard for all site's users, domain's users, or OU users.

Note: If an application is assigned to a user, it is announced to him/her when he/she logs on. The application is installed when the user selects it on the start menu or tried to open a document created with the application

12

GPO and applications

- With Computer Configuration, you can assign applications to computers.
 - If an application is assigned using the Computer Configuration node, it will appear in the Start menu for all computers in the site, domain or OU.

13

GPO rules

- GPOs assigned to the site are processed first, next GPOs assigned to the domain are processed, and finally GPOs assigned to OUs and child OUs are processed.
- The policy finally assigned to a computer or a user is the cumulative effect of all GPOs assigned to the site, domain, and OU to which the user or computer belongs.

14

GPO rules (cont.)

- If a GPO is assigned to the parent container, but not the child container, the parent container settings apply.
- If GPOs are assigned to both parent and child container and there is no conflict, both GPOs apply.
- If GPOs are assigned to both parent and child container and there is a conflict, the child container settings apply.
- In case of conflict, computer settings take precedence over user settings.

15

Setting Local Computer Policy

- A Local Computer Policy applies when you logon to the local computer (not the domain)
- Policies set in Computer Configuration node
 - apply to the computer, regardless of who logs on
- Policies set in User Configuration node
 - apply to each user who logs on to the computer
- The gpedit.msc command tool is use to launch the Local Computer Policy snap-in

The Group Policy settings applied by your network administrator take precedence over any of the Group Policy settings you have configured on your computer

16

Exercise: Creating Group Policy Objects (GPO) and setting policies

- Hands-on exercise in lab

17
