

EISE Project Meeting Notes
Eastern Illinois University

Team/Group: **Degree Audit Process Team**

Date: August 10, 2006

Time: 3 p.m..

Place: 109 Old Main

Attendees: Auditors only: S. Arnholt, L. Creath, S. Hankenson, M. Hennig, M. Herrington-Perry, B. Kuykendall, B. Miller, R. Raney, B. Wilson

Prepared by: MHP

Announcements:

- Cathy Ashmore asked that DARS users' who experience problems with DARS send Vicki Phillips/copy MHP an email containing a screenshot showing the error and a description of what the user was doing when it occurred.
- We are past our mid-point! I spoke with all the audit encoders. Team members report either being at the half-way point or optimistic about meeting the November 30 deadline. Access issues remain of concern to all of us using DARwin.
- Mike Faullin, UIUC, will talk to us about DARwin encoding over lunch, September 7.
- The implementation of Banner will require us to set deadlines for course revision. Course revisions cannot go into effect after scheduling begins, and thus any changes that affect the Fall 2007 schedule (whether they are to be effective the Spring 2007, Summer 2007, or Fall 2007) must be approved by Councils before September 18, which is when scheduling begins. This policy will not affect the development or addition of new courses.
- Gen Ed is done, though I am certain there is room for revision. There are now three separately dated sets of gen ed requirements:
 - 1992 90 - 2000 60
 - 2000 90 - 2006 60
 - 2006 90 - 9999 99

EISE Project Meeting Notes Eastern Illinois University

Select Requirements			
Req't Name	FYT	LYT	Title
GE-CD	200090	999999	Cultural Diversity
GE-CONST	199290	200660	Constitution
GE-CULTEX	199290	200060	Cultural Experience
GE-EXCESS	000000	999999	Courses in Excess of Those Required
GE-FCIV	199290	200060	Foundations of Civilization
GE-FLG	199290	200060	Foreign Languages
GE-HB	199290	200060	Human Behavior, Social Interaction, and Well-Being
GE-HUM/FA	200090	999999	Humanities and Fine Arts
GE-LANG	199290	200060	Language
GE-LANG	200090	999999	Language
GE-MATH	199290	200060	Quantitative Reasoning and Problem Solving
GE-MATH	200090	999999	Mathematics
GE-SB	200090	200660	Social and Behavioral Sciences
GE-SB	200690	999999	Social and Behavioral Sciences
GE-SCI	199290	200060	Scientific Awareness
GE-SCI	200090	999999	Scientific Awareness
GE-SS	199290	999999	Senior Seminar
GE-JPDIV	199290	200060	Upper Division Hours Requirement

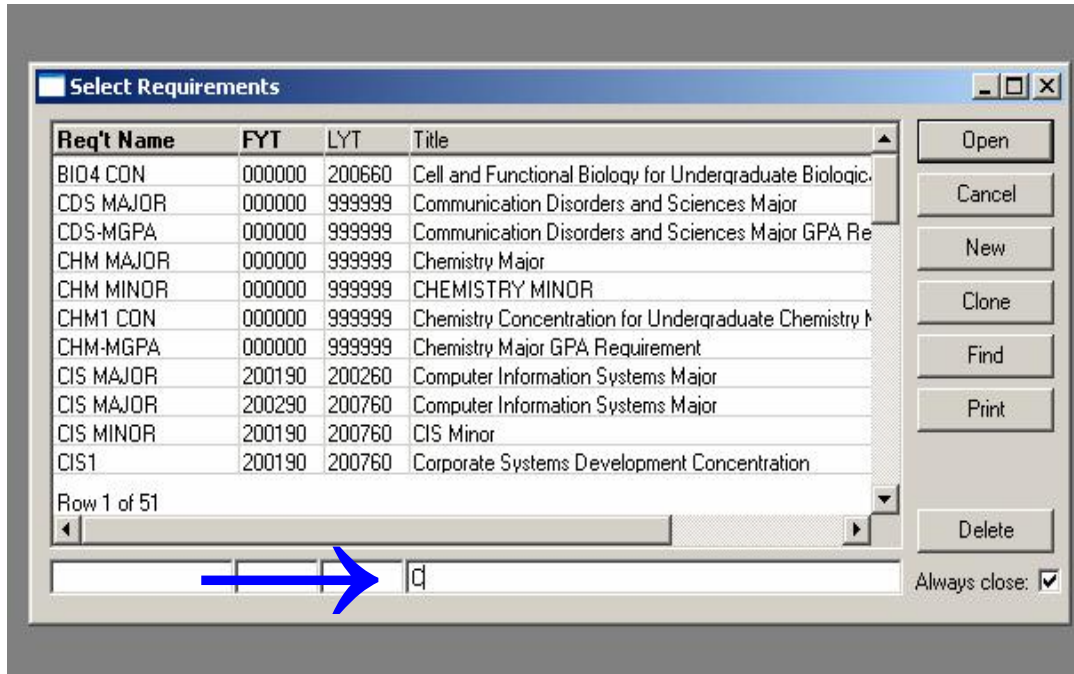
Check the EIU DPROGS if you are uncertain which gen ed requirement corresponds to which catalog year/term.

- Please do use the marker function for concentrations at both the undergraduate and graduate levels. This information will be entered in Banner and interfaced to DARwin.

Agenda and discussion items

1. Encoding tips and questions
 - Quick search

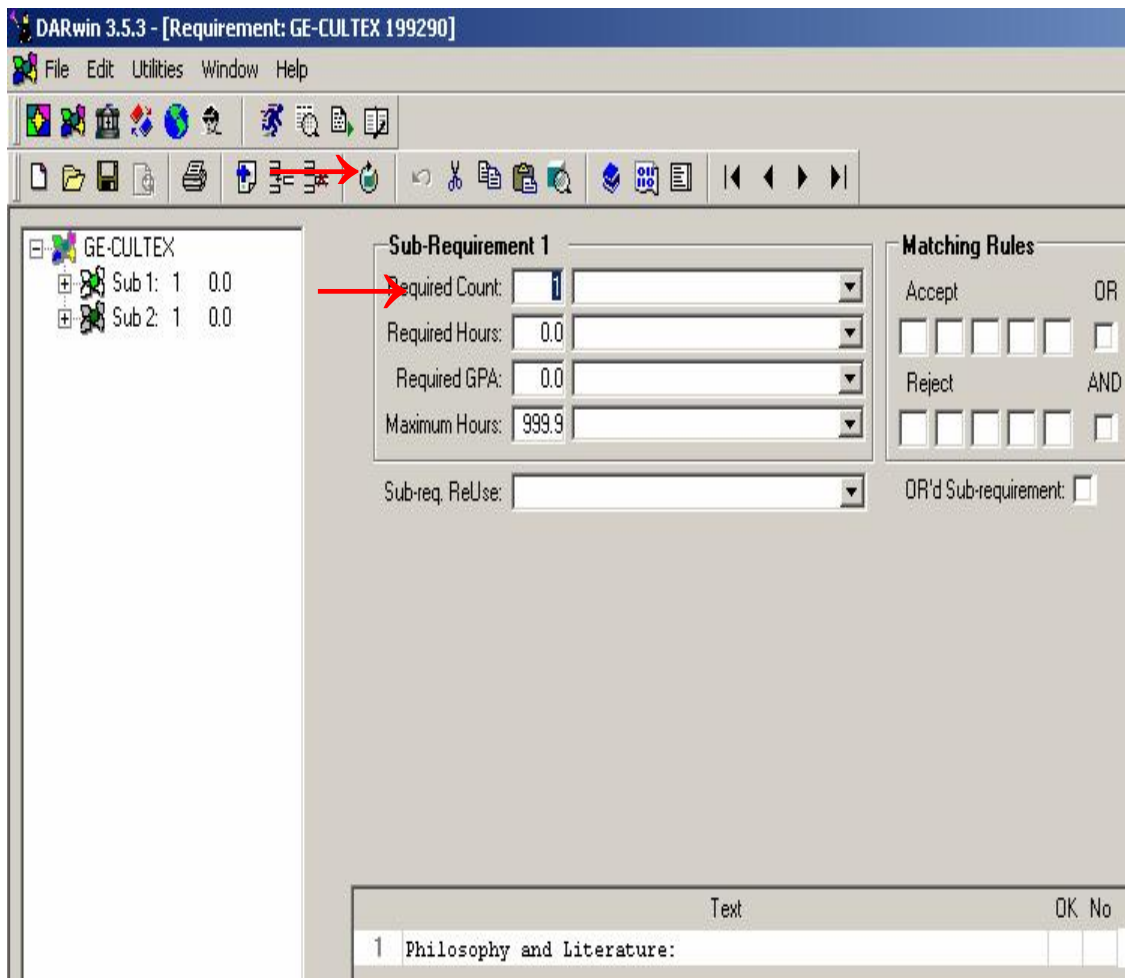
**EISE Project Meeting Notes
Eastern Illinois University**



- Hiding courses by encoding them below the pseudo course (in cases where you don't want to advertise that you will count certain course toward the requirement)

EISE Project Meeting Notes Eastern Illinois University

- **Deleting a subrequirement:** Highlight the subrequirement to be deleted. Click in the “Required Count” box, select “Delete Row,” and the subrequirement disappears!



- What it means when your courses turn **red**: The way you have typed the course has violated the course mask, which is set up as AAA?9999?

EISE Project Meeting Notes Eastern Illinois University

THA 3753C	
THA 3793C	
GE-PLT	\$
ENGRD 50000	\$
Sub 2: 1	0.0

Text

1	Philosophy and Literature:
---	----------------------------

	A	Course	M	Title
4	A	ENG 2099C		
5	A	ENG 2011C		
6	A	ENG 2091C		
7	A	ENG 3009C		
8	A	ENG 3099C		
9	A	ENG 3010C		
10	A	ENG 3090C		
11	A	ENG 3100C		
12	A	ENG 3110C		
13	A	PHI 1500C		
14	A	PHI 1590C		
15	A	PHI 3100C		
16	A	PHI 3110C		
17	A	THA 3753C		
18	A	THA 3793C		
19	A	GE-PLT	\$	
20	A	ENGRD 50000		

**EISE Project Meeting Notes
Eastern Illinois University**

2. The Application for Graduation: Discussion was postponed, though auditors were asked to review the application at <https://www.paws.eiu.edu/CICST/XPWA/XSMBWEBM/STUSTART.STR?CONVTOKEN=INIT>. (Use SSN 335789248 and PIN 1111.)
3. Technology/Access: Mike continues to work to resolve the errors auditors are encountering.
4. Other Issues
 - The course bank still is not working as it used to. Courses are not being added to it.
 - Using a group code in a minor or concentration DPROG will restrict courses from double counting.
 - We need to ensure that the grade table is built so that it does not figure transfer courses in the GPA.
 - Auditors requested that the COM table calculate GPA to two decimal places. MHP will look into this.
 - The G to C conversion now appears to be working in the Convert Table.
5. Deadlines:
 - August 1 was the halfway point.
 - November 30 is the finish line.
6. Next Meeting: TBA via the list serv

Action Items

Item Identifier	Item Description	Owner	Target Completion Date	Status
1.	DARS Training	MHP, MH, BK	2-10-06	Completed
2.	H40 Cleanup	MHP & Auditors	3-3-06	Completed
3.	Academic Naming Conventions	MHP & Auditors	3-3-06	Completed
4.	Degree Audit Completion Schedule	Auditors	3-20-06	Completed
5.	DARS Training	Auditors	4-14-06	Completed
6.	DARwin Installation	ITS	5-15-06	Phase I Completed
7.	Audit Building	MHP & Auditors	11-30-06	Underway