



Site Planning Guidelines

*Site planning guidelines establish the basic parameters for the use of **exterior space** on campus.*

This section details the site elements, rules for their location and other specifications. It is organized as follows:

- Site Planning Overview
- Site Resource Protection
- Storm Water Detention and Erosion Control
- Open Space/Building Separation Guidelines
- Vehicular Systems
- Campus Entries
- Streets
- Drop-off zones
- Parking
- Building Service Courts
- Pedestrian Portals
- Security



Site Planning Guidelines



Site Planning Overview

Overall, the Eastern Illinois University campus appears well maintained and attractive. The organization of the campus landscape environment, however, presently consists of a variety of outdoor spaces that lack an overall unifying framework. While individually they possess a well-defined spatial organization and character, the campus on the whole lacks unifying elements necessary to convey a cohesive campus theme. These guidelines are intended to promote a more attractive and visually cohesive campus environment.

Site Resource Protection

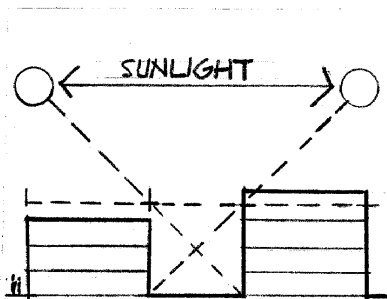
Prior to construction of new facilities or site disturbance, the existing site resources should be investigated and documented, including such elements as:

- Potential archaeological artifacts
- Threatened and endangered species
- Wetlands

Such resources should be protected in accord with state and federal laws.

Storm Water Detention and Erosion Control

The design and engineering of new facilities should include provision for storm water detention and erosion control. Storm water may be detained either on site or in a regional basin that serves multiple campus sites. The goal is to not increase runoff and to avoid downstream sedimentation from campus.



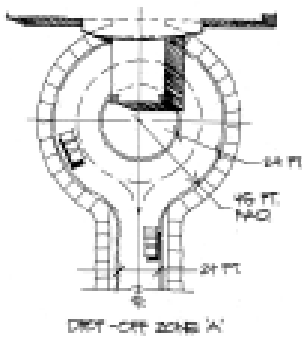
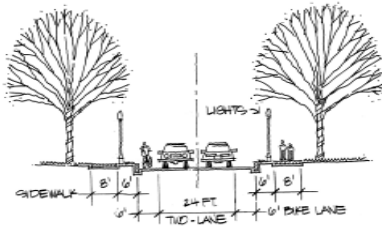
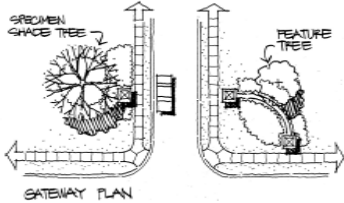
Open Space/Building Separation Guidelines

The EIU campus is formed with a series of quadrangle and courtyard spaces. Without compromising internal building functional organization, footprints of new buildings and additions should be formed to refine, enhance and perpetuate the quadrangle tradition wherever possible.

To ensure penetration of sunlight to ground level, the distance between any two buildings should generally be no less than the average combined height of the two.



Site Planning Guidelines



Vehicular Systems

Campus Entries: Major campus entry points for vehicles should be identified with a gateway sign. The illustration shows a concept for such a gateway. The gateways may have elements on one or both sides of the street, depending on the location.

The gateway signs should include the wording “Eastern Illinois University”, and be constructed of durable materials that are compatible with the traditional stone and brick detailing of campus buildings. Appropriate lighting should be provided for nighttime illumination.

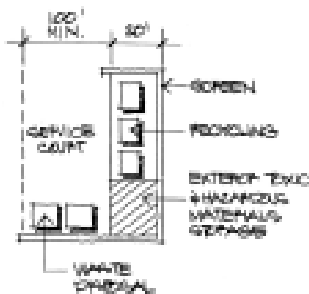
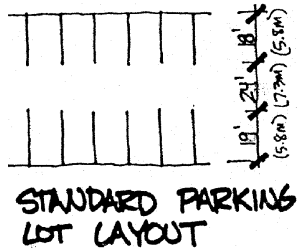
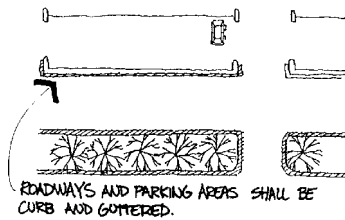
For recommended gateway locations, see the Campus Master Plan section.

Campus Streets: Typical campus streets should accommodate two lanes of traffic, dedicated bicycle lanes, street lighting, sidewalks, and street trees as depicted in the illustration.

Drop-off Zones: Vehicular drop-off zones are to be paved access points providing direct access to buildings for visitor drop-off. They should be located at vehicular turn-arounds and easily accessed from major campus entries. They are not to be used for deliveries or short term parking. The treatment of drop-off zones shall conform to the following criteria:

- Provide a clear sense of arrival and orientation to the user
- Allow for sufficient vehicle stacking space
- Integrate with the surrounding architecture in material choice and construction methods
- Use low maintenance materials
- Provide adequate area for two lanes of one-way traffic as indicated in the graphic

Site Planning Guidelines



Curb Cuts, Crowns, and Drainage Details: Curb cuts shall occur at all pedestrian crossings and include wheelchair ramps, which comply with ADA standards. All walks should have positive drainage, crowned or pitched at 2% cross-slope to drain water from walks onto adjacent landscape areas.

Parking

Campus parking lots should be designed according to the minimum standards illustrated. Typical parking stalls should be 9' by 18' with 24' driving aisles. Open areas should be provided at the ends of driving aisles for snow storage.

Parking lots should be effectively landscaped to maintain campus aesthetics.

Building Service Courts

The exterior service elements for buildings are to be grouped wherever possible into service courts. Space should be provided within the court for necessary outdoor storage of materials, equipment and trash; they should accommodate vehicular turning movements, and have dedicated parking for service vehicles. These courts should be buffered with some combination of walls, berms and plant materials. Screen walls should be opaque and constructed of the same materials as the building exterior. Entry gates are recommended to screen the service court from pedestrian areas.

Pedestrian Portals

Major pedestrian entries to the academic core of the campus should be marked with a portal. The illustration shows a concept for such a portal.

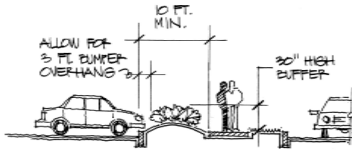
The portals should include the wording "Eastern Illinois University", and be constructed of durable materials that are compatible with the traditional stone and brick detailing of campus buildings.

For recommended portal locations, see the Campus Master Plan section.

Security: Parents entrust a university with the intellectual growth and physical well-being of their children, so the campus must be a safe and secure place. Special attention should be paid to the avoidance of blind spots, hiding places or hidden niches along pedestrian paths and in public spaces.



Site Planning Guidelines



Shrubs and hedges adjacent to entries and all sidewalks should be maintained at less than thirty inches in height to increase visibility. Other solid site structures over 30" in height (excluding trees) that would function as hiding places should be avoided as well.

Adequate lighting and signage should be provided throughout campus along all pedestrian paths. Lighting should be designed not only to illuminate walking surfaces, but oncoming pedestrians as well. Parking lots and pedestrian paths should be illuminated from dusk to dawn with a generally consistent level of light, at a minimum light level of 0.5 foot-candles and an average light level of 1.5 foot-candles.

The "Blue Light Emergency Phones" should be positioned in strategic locations throughout the campus.



Campus Master Plan

Site Planning Guidelines

Blank Page